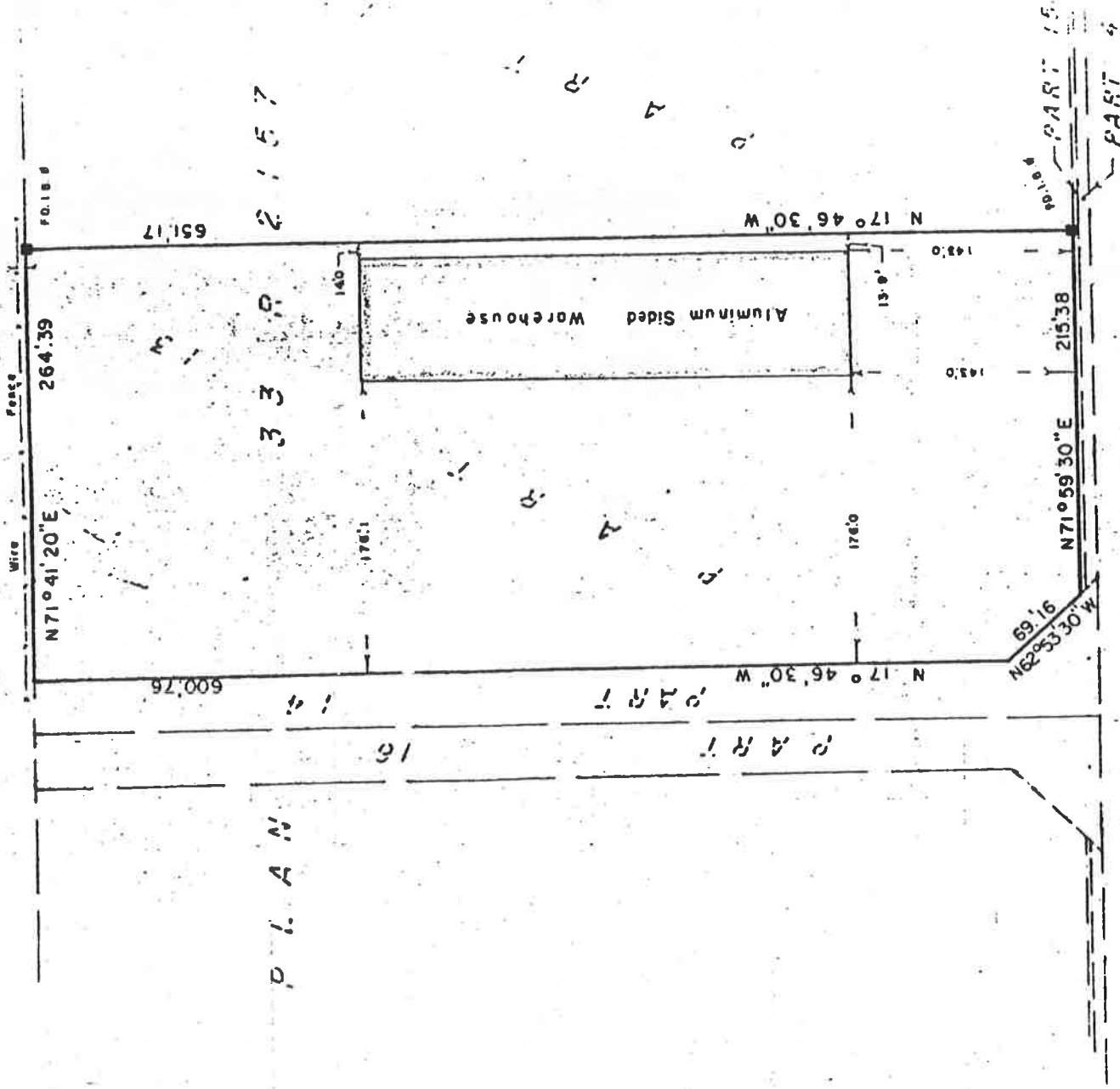


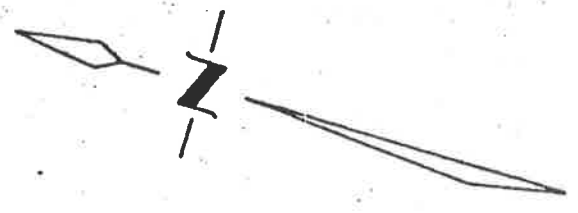
SCHEDULE "A"



COUNTY ROAD N E 35

PLAN SHOWING BUILDING LOCATION
 ON PART OF
**LOT 56, CONCESSION WEST THE
 NORTH BRANCH OF THE TALBOT ROAD**
 (BEING PART 13, PLAN 33R-2157)
 IN THE
TOWNSHIP OF WESTMINSTER

SCALE 1" = 100
 1978



J.D. Annable
 J.D. ANNABLE O.L.S.

JAN. 25, 1978